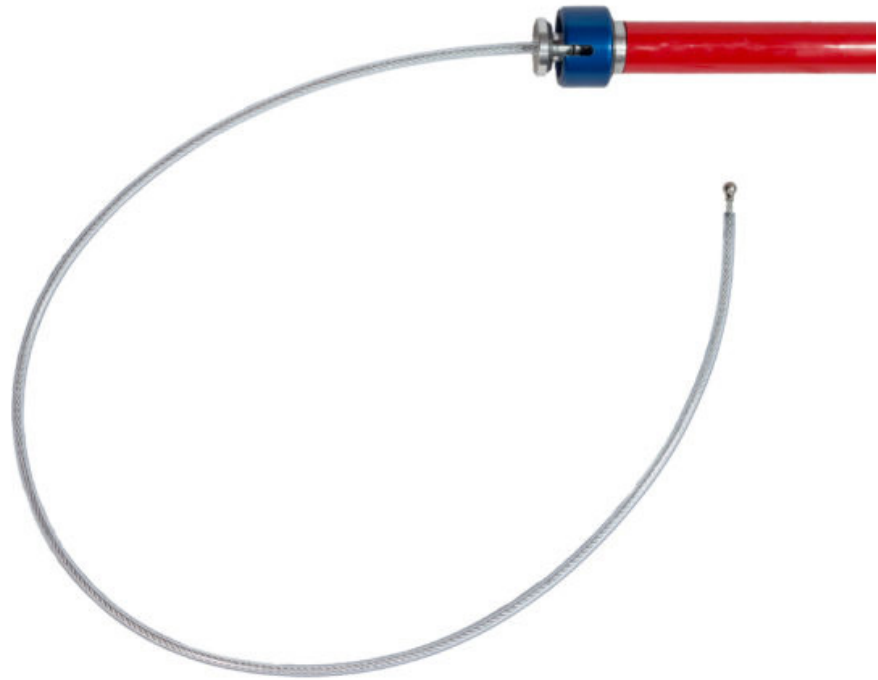


KETCH-ALL 5' SNARE POLE

2023 - INSTRUCTION MANUAL



FOR PRODUCT
MANUALS AND VIDEOS,
SCAN THE QR CODE



DISCLAIMER: THIS PRODUCT WAS DESIGNED AND INTENDED FOR THE SOLE PURPOSE OF WILDLIFE CONTROL AND MANAGEMENT. THE PROPER AND SAFE USE OF THIS PRODUCT IS THE SOLE RESPONSIBILITY OF THE OWNER AND/OR OPERATOR. THE SELLER ASSUMES NO RESPONSIBILITY OR LIABILITY FOR THE IMPROPER AND/OR ILLEGAL USE, RESALE, ANY PHYSICAL INJURY AND/OR PROPERTY DAMAGE RESULTING FROM DELIBERATE OR ACCIDENTAL DISCHARGE OF THE PRODUCT, OR MODIFICATIONS MADE TO THE PRODUCT, SELF-SUPPLIED MATERIALS USED ALONG WITH THE PRODUCT, CARELESS OPERATION OR MAINTENANCE NEGLECT OF THIS PRODUCT.

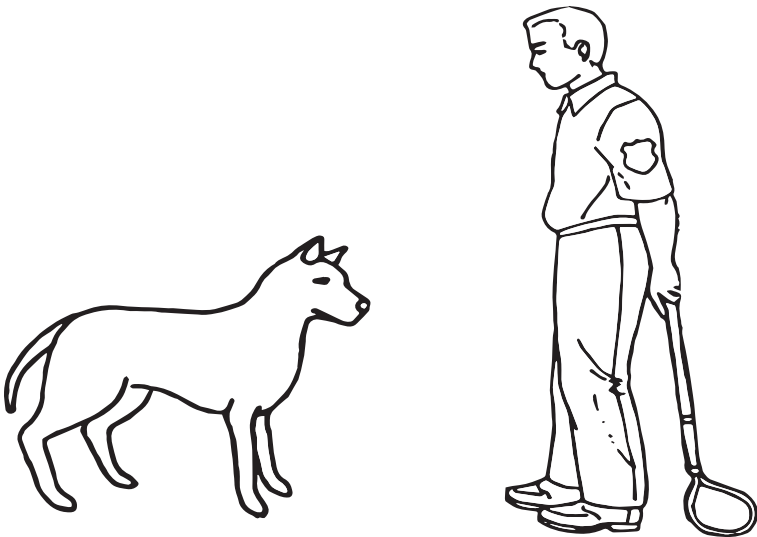


PLEASE NOTE:

The Ketch-All pole is designed to safely coax animals to safety. Using the pole as a weapon is inappropriate and could easily endanger the animal and the animal control officer. It's important to quickly examine the control pole before each use, to make sure that cable and release mechanisms are operating smoothly. Control poles are not for use on cats.

1. APPROACHING ANIMAL

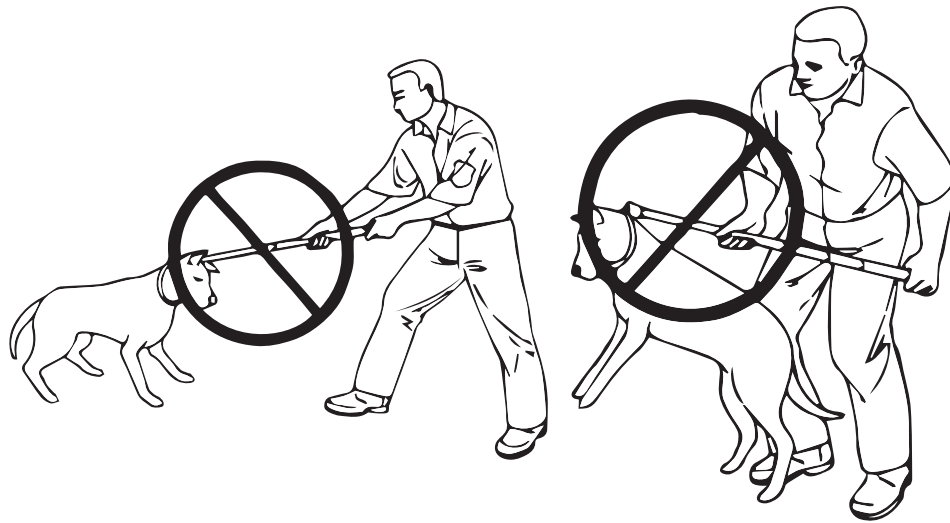
Approach the animal slowly, holding the Ketch-All Pole directly behind you or at your side, with the cable loop hanging loosely. DO NOT approach animal with a control pole held high, like a weapon, as this will set the tone for the entire encounter.



2. DEPLOYING POLE

Using both hands, slip the noose smoothly over the animal's head until the loop is around the neck. Use one hand to pull the release cord to tighten the cable until the loop fits snugly, but not too tight. The pole is designed to maneuver the animal not to choke or force an animal into submission.





3. LEADING THE ANIMAL

Keep both hands a slight distance apart on the pole. Once the loop is secured about the animal's neck, stand beside the animal and slowly guide the animal ahead. Most animals will readily walk forward if you remain in their field of vision, but in some cases walking directly behind them may prompt them to move ahead.



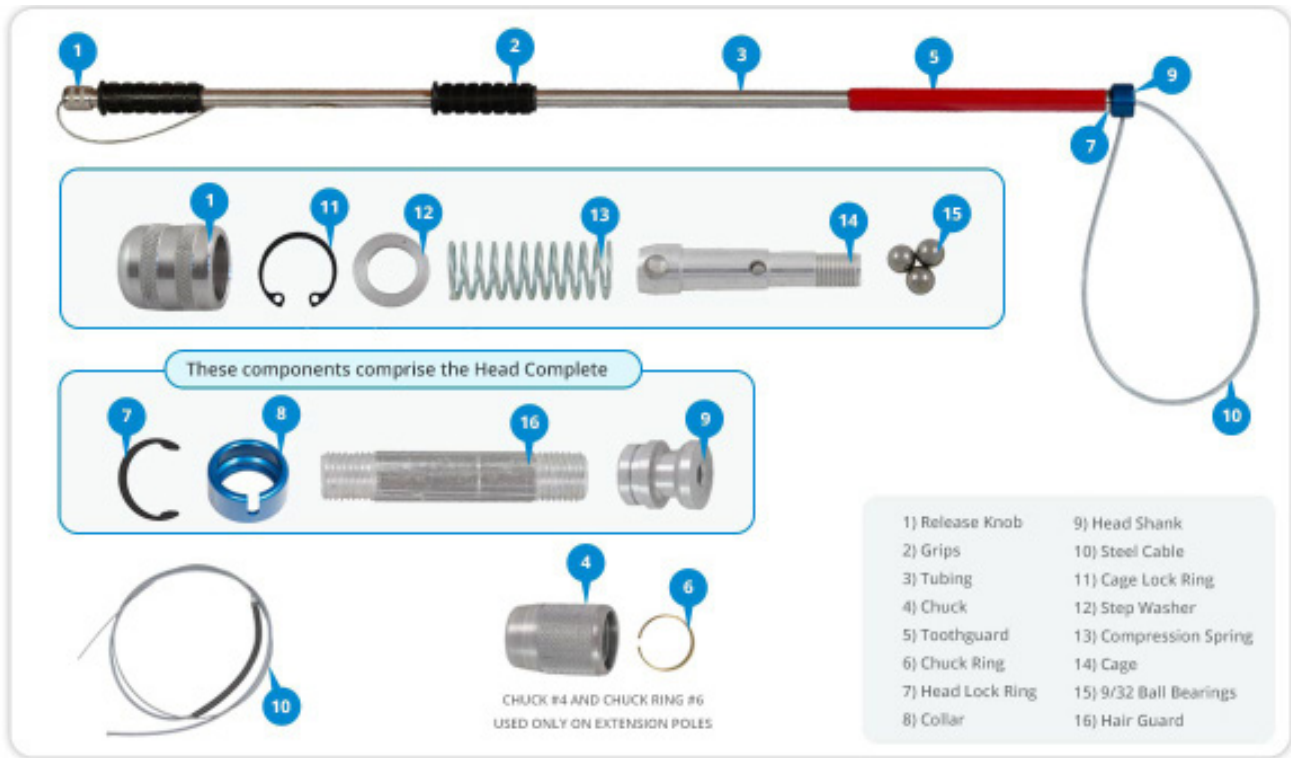
4. CONTROL & RELEASE

Never drag, yank, pull, or lift a dog with a control pole, since dogs are often put in a truck for transport, it is a good idea to bring a ramp (a piece of plywood will do) to direct them into a cage. Then, just loosen the cord. While using one hand to carefully close the cage door, use the other hand to remove the control pole with the other.

KETCH-ALL PARTS LIST

IMPORTANT:

When ordering parts, please specify length of pole and whether it is a standard or extension pole.



TO REMOVE CABLE

1. Remove Head **Lock Ring** (7) located behind **Collar** (8).
2. Pull **Collar** (8) back toward rear of pole until **Head shank** (9) is exposed.
3. **Note:** It may be necessary to slide **Toothguard** (5) back in order to pull collar back.
4. Remove **Head Shank** (9), which is right-hand thread, leaving **Collar** (8) on pole.
5. **IF APPLICABLE:** remove allen set screw #6 (with allen wrench) located on **Head Shank** (9)
6. When **Head Shank** (9) is free, pull **Release Knob** (1) back and hold in this position (we suggest using vice grips) while pulling cable out through the other end of pole.
7. Pull **Compression Spring** (13) from **Hair Guard** (16)

REPLACE HEAD

To remove cable and to install cable above. You will damage about one inch of cable spring when you pull the old head off. This should be cut off to enable you to screw the new hair guard into the part of the spring that remains intact.

TO INSTALL CABLE

1. Insert ball of cable through **Hair Guard** (16) (which should be attached to **Head Shank**(9), running **Steel Cable** (10) through until **Hair Guard** (16) meets **Compression Spring** (13).
2. Screw **Hair Guard** (16) into **Compression Spring** (13). The **Steel Cable** (10) is now ready to install.
3. Insert **Steel Cable** (10) through **Tubing** (3), pulling back on **Release Knob** (1) to allow cable to pass through locking device.
4. Screw head onto end of pole.
5. Insert cable ball in groove or track in **Head Shank** (9).
6. Pull **Collar** (8) over head and cable ball, and replace lock ring /fl.
7. IF APPLICABLE: replace set screw #6

TO DISASSEMBLE
LOCKING DEVICE

1. Pull back on **Release Knob** (1), turning it until hole in **Tubing** (3) lines up with hole in **Cage** (14).
2. Insert ice pick or nail through holes, thus keeping locking device from turning.
3. Remove **Release Knob** (1), which is a right hand thread. There should be a **Step Washer** (12) inside **Release Knob** (1).
4. Remove: **Cage Lock Ring** (11), **Step Washer** (12) , **Compression Spring** (13), **Cage** (14) and **9/32 Ball Bearings** (15).